



AlumaView® powdercoat painted RAL# 6004



ARMORBRITE™

For an attractive appearance with exceptional durability, ArmorBrite finishes give you design flexibility while also protecting your investment. You can count on uniform coverage and a smooth, long-lasting finish that outperforms any field-applied coatings for corrosion resistance and color retention. All 187 finishes are available with quick turnaround time and are available for several door models and door model components. Ask your Authorized Raynor Dealer for full details regarding availability.



TC300 powdercoat painted RAL# 3020 (red door only)



RAL 1000 49/15200



RAL 1019 49/13660 • 38/15019



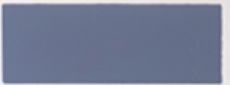
RAL 2008 49/24340



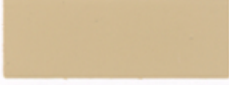
RAL 3014 49/31080



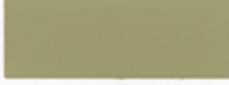
RAL 4008 49/32280



RAL 5014 49/42320



RAL 1001 49/15190 • 38/15001



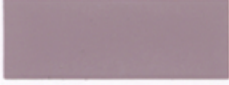
RAL 1020 49/22500 • 38/20020



RAL 2009 49/24360



RAL 3015 49/33670



RAL 4009 49/34740



RAL 5015 49/42330



RAL 1002 49/22590 • 38/20002



RAL 1021 49/22280



RAL 2010 49/24520



RAL 3016 49/31980



RAL 4010 49/40490



RAL 5017 49/40760 • 38/40017



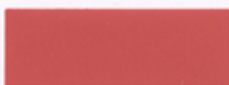
RAL 1003 49/22580



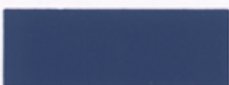
RAL 1023 49/22490 • 38/20023



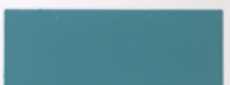
RAL 2011 49/24580



RAL 3017 49/31060



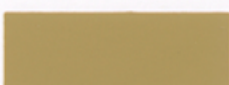
RAL 5000 49/42200



RAL 5018 49/41140 • 38/40020



RAL 1004 49/22570 • 38/20004



RAL 1024 49/22480



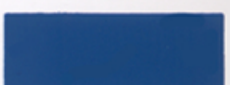
RAL 2012 49/24690



RAL 3018 49/31050



RAL 5001 49/42210



RAL 5019 49/42360 • 38/40019



RAL 1005 49/22560



RAL 1027 49/22470



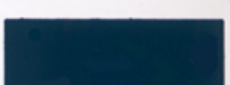
RAL 3000 49/33120



RAL 3020 49/31040



RAL 5002 49/42220



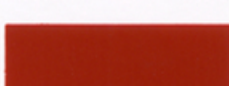
RAL 5020 49/44270 • 38/40018



RAL 1006 49/22550



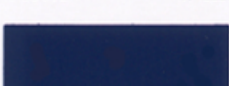
RAL 1028 49/22460



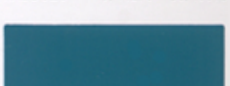
RAL 3001 49/31120



RAL 3022 49/33700



RAL 5003 49/42230



RAL 5021 49/41190 • 38/40021



RAL 1007 49/22540



RAL 1032 49/22450



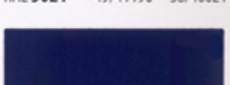
RAL 3002 49/31110



RAL 3027 49/33660



RAL 5004 49/42240 • 38/40004



RAL 5022 49/42390



RAL 1011 49/15180



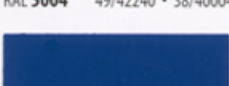
RAL 1033 49/22240



RAL 3003 49/31100



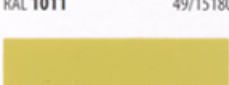
RAL 3031 49/34730



RAL 5005 49/43190



RAL 5023 49/44650



RAL 1012 49/22530



RAL 1034 49/23910



RAL 3004 49/33900



RAL 4001 49/43160



RAL 5007 49/42250 • 38/40007



RAL 5024 49/44660



RAL 1013 49/11280 • 38/10013



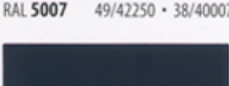
RAL 1037 49/20096



RAL 3005 49/31900



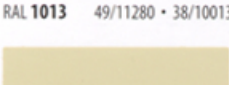
RAL 4002 49/31030



RAL 5008 49/42260 • 38/40008



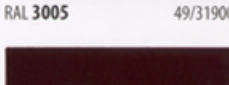
RAL 6000 49/53160 • 38/50000



RAL 1014 49/15170 • 38/15014



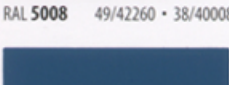
RAL 2000 49/24570



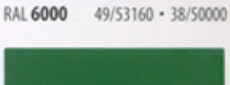
RAL 3007 49/31910



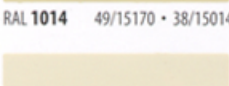
RAL 4003 49/32270



RAL 5009 49/42270



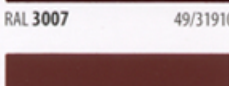
RAL 6001 49/52900 • 38/50005



RAL 1015 49/15320 • 38/15015



RAL 2001 49/24560



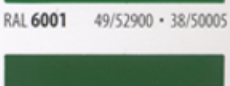
RAL 3009 49/31920



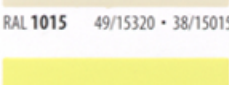
RAL 4004 49/31020



RAL 5010 49/42280



RAL 6002 49/52890



RAL 1016 49/22520 • 38/20016



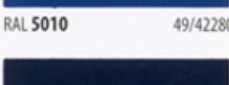
RAL 2002 49/24550



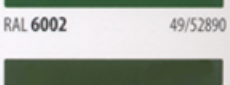
RAL 3011 49/31090



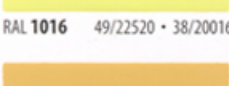
RAL 4005 49/42780



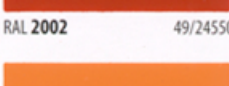
RAL 5011 49/43180 • 38/40011



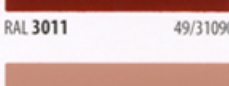
RAL 6003 49/52880 • 38/50003



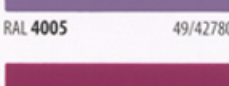
RAL 1017 49/22510



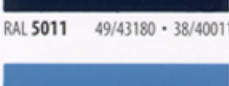
RAL 2003 49/24540



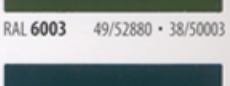
RAL 3012 49/31940 • 38/30012



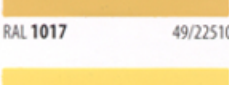
RAL 4006 49/32090



RAL 5012 49/43170



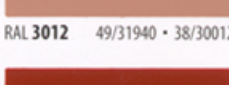
RAL 6004 49/50980 • 38/50004



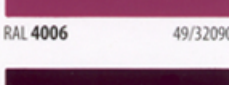
RAL 1018 49/21830



RAL 2004 49/24530



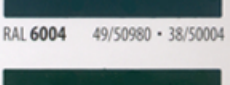
RAL 3013 49/31950



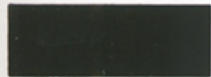
RAL 4007 49/32540



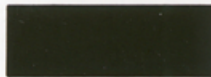
RAL 5013 49/42310 • 38/40013



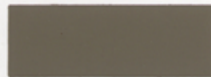
RAL 6005 49/50670 • 38/50002



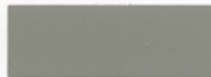
RAL 6006 49/52870 • 38/50006



RAL 6022 49/52690 • 38/50022



RAL 7006 49/72580 • 38/70006



RAL 7030 49/72890 • 38/70027



RAL 7045 49/77890 • 38/70045



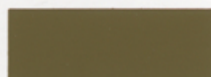
RAL 8019 49/65490 • 38/60019



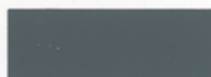
RAL 6007 49/52860 • 38/50007



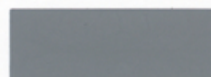
RAL 6024 49/52680



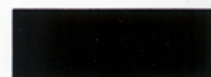
RAL 7008 49/72570



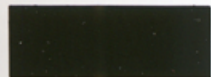
RAL 7031 49/72520 • 38/70031



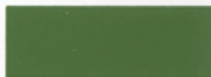
RAL 7046 49/72010 • 38/70002



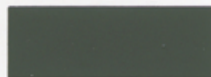
RAL 8022 49/63080 • 38/60022



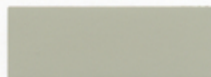
RAL 6008 49/53240 • 38/50008



RAL 6025 49/52670



RAL 7009 49/72770 • 38/70009



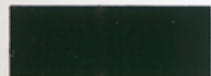
RAL 7032 49/72910 • 38/70001



RAL 7047 49/72020 • 38/70047



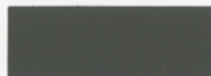
RAL 8023 49/66070 • 38/60023



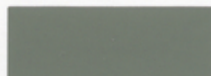
RAL 6009 49/52840 • 38/50009



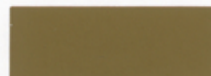
RAL 6026 49/52660 • 38/50026



RAL 7010 49/72560 • 38/70014



RAL 7033 49/72510 • 38/70033



RAL 8000 49/66170



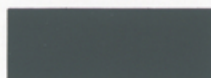
RAL 8024 49/66060 • 38/60024



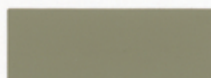
RAL 6010 49/52830 • 38/50031



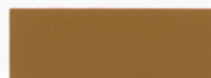
RAL 6027 49/50990 • 38/50027



RAL 7011 49/72790 • 38/70011



RAL 7034 49/72500



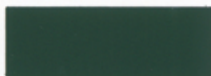
RAL 8001 49/66160 • 38/60005



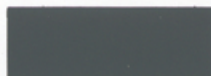
RAL 8025 49/66050 • 38/60025



RAL 6011 49/52820 • 38/50011



RAL 6028 49/52650 • 38/50028



RAL 7012 49/71180 • 38/70012



RAL 7035 49/73510 • 38/70035



RAL 8002 49/66150 • 38/60002



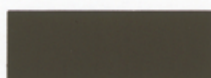
RAL 8028 49/66500 • 38/60028



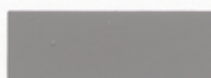
RAL 6012 49/51540 • 38/50012



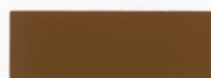
RAL 6029 49/52640 • 38/50029



RAL 7013 49/72550 • 38/70013



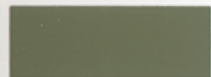
RAL 7036 49/72950 • 38/70036



RAL 8003 49/66140 • 38/60003



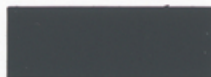
RAL 9001 49/10016 • 38/10001



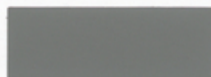
RAL 6013 49/52810 • 38/50013



RAL 6032 49/52630 • 38/50032



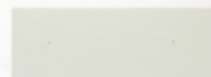
RAL 7015 49/72820 • 38/70015



RAL 7037 49/72480 • 38/70037



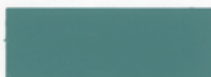
RAL 8004 49/66130 • 38/60004



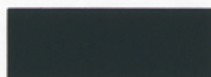
RAL 9002 49/70520 • 38/10002



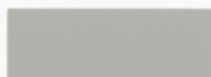
RAL 6014 49/52800



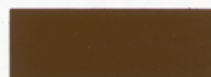
RAL 6033 49/55010 • 38/50033



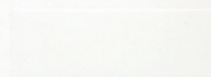
RAL 7016 49/72830 • 38/70016



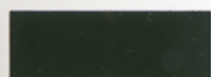
RAL 7038 49/72470 • 38/70038



RAL 8007 49/66120 • 38/60007



RAL 9003 49/11400 • 38/10003



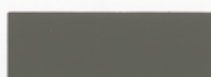
RAL 6015 49/52790



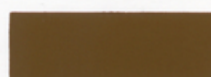
RAL 6034 49/55020 • 38/50034



RAL 7021 49/72540 • 38/70021



RAL 7039 49/71020 • 38/70039



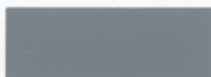
RAL 8008 49/66110 • 38/60008



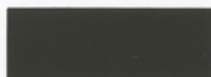
RAL 9004 49/81950 • 38/80004



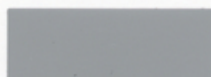
RAL 6016 49/51020 • 38/50016



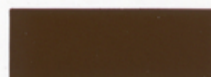
RAL 7000 49/72700 • 38/70000



RAL 7022 49/72850 • 38/70022



RAL 7040 49/75470 • 38/70046



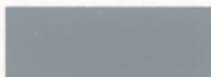
RAL 8011 49/66100 • 38/60011



RAL 9005 49/82830 • 38/80010



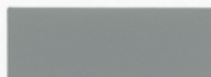
RAL 6017 49/52780 • 38/50017



RAL 7001 49/72710



RAL 7023 49/72530 • 38/70023



RAL 7042 49/73250 • 38/70042



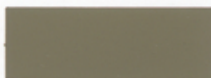
RAL 8012 49/66090 • 38/60012



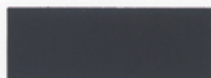
RAL 9010 49/11500 • 38/10004



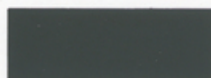
RAL 6018 49/52720 • 38/50018



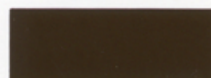
RAL 7002 49/72720 • 38/70007



RAL 7024 49/72870 • 38/70024



RAL 7043 49/72460 • 38/70043



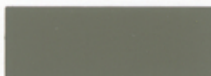
RAL 8014 49/65230 • 38/60010



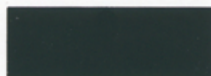
RAL 9011 49/80540



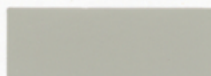
RAL 6019 49/51000 • 38/50019



RAL 7003 49/72600



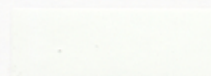
RAL 7026 49/72880 • 38/70026



RAL 7044 49/75480 • 38/70044



RAL 8015 49/63040



RAL 9016 49/11340 • 38/10010



RAL 6020 49/52710 • 38/50020



RAL 7004 49/73300 • 38/70004

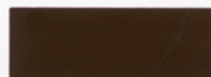


RAL 7005 49/72590 • 38/70005

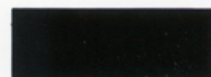


RAL 6021 49/52700 • 38/50021

TIGER Drylac®
Powder Coatings



RAL 8016 49/66080 • 38/60016



RAL 9017 49/80550 • 38/80017



RAL 8017 49/65220 • 38/60017



RAL 9018 49/72490 • 38/10018

Series 49 (standard)

Weather Resistant TGIC Polyester Powder Coatings for Exterior and Interior Applications

Features: Good weather resistance, good mechanical properties, very smooth flow, good storage stability, good coverage.

Gloss Level: All colors featured in this chart are available as standard products in smooth glossy with a gloss level of 80-90+ (gloss level according to Garner 60 deg., ASTM D 523).

Typical Applications: Most residential and commercial doors.

For more details, visit www.raynor.com.

RAL

Having gained worldwide acceptance over the last few decades, the RAL is the most popular Central European Color Standard used today.

The RAL colors in this chart have been matched as closely as possible. Color chart production methods and influence from heat and light may account for slight color deviation from the actual RAL Standard. This chart therefore can not serve as a standard for RAL color production and is to be used as a guide for color planning and specification only.

Standard Raynor Powdercoat Colors

EnduraCote™ Black	STBL
EnduraCote™ White	STWH
Brown	S-Br
Matte Black	MBLK (RAL9005)
Kynar Sepia	S-KS
Kynar Beige	S-KB

Anodizing Color Equivalents

Clear Anodize	A215
Champagne	A300
Light Bronze	N/A
Medium Bronze	A302
Dark Bronze	A303
Extra Dark Bronze	A304
Black	A305

Series 38 (optional upgrade)

Highly Weather- and UV-Resistant Powder Coatings based on Super Durable TGIC Polyester for Exterior and Interior Applications

Features: Superior gloss and color retention, excellent weather resistance, good mechanical properties, superior chalk resistance, smooth flow, excellent edge coverage, good storage stability. AAMA 2604-05 conforming.

Gloss Level: All colors featured in this chart are available as standard products in smooth glossy with a gloss level of 80-90 (gloss level according to Gardner 60 deg., ASTM D 523).

Typical Applications: Garage doors in highly corrosive environments and in marine applications.

RAL colors not available: Due to pigmentation a small percentage of colors in the yellow, orange, red and purple range offer only limited UV stability and are therefore not available. More standard Series 38 products: For additional architectural mattes, glossy and metallic products please see our Series 38 Super Durable Powder Coatings brochure.

Custom colors: Custom colors not shown in this brochure can be custom made in 7 to 10 days. Due to pigmentation some colors in the yellow, orange, red and purple range offer only limited UV stability.

UV stability of custom colors in that color range must be verified by our production laboratories on a case by case basis.

Please Note:

Series 49 - Standard coating

Series 38 - Marine-grade coating is available as a special order. Contact your Raynor Dealer for special quoting.